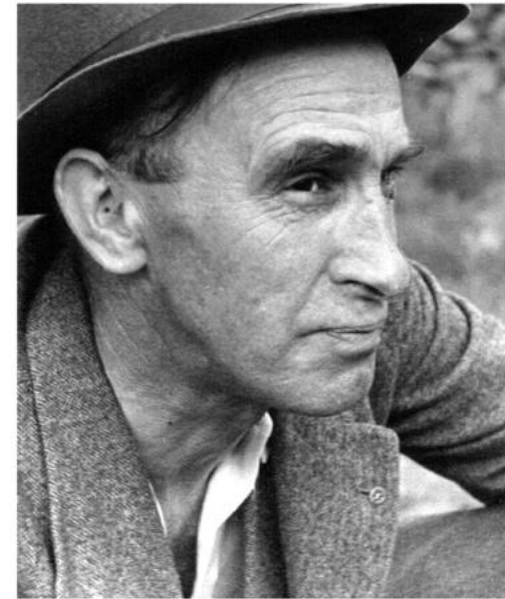


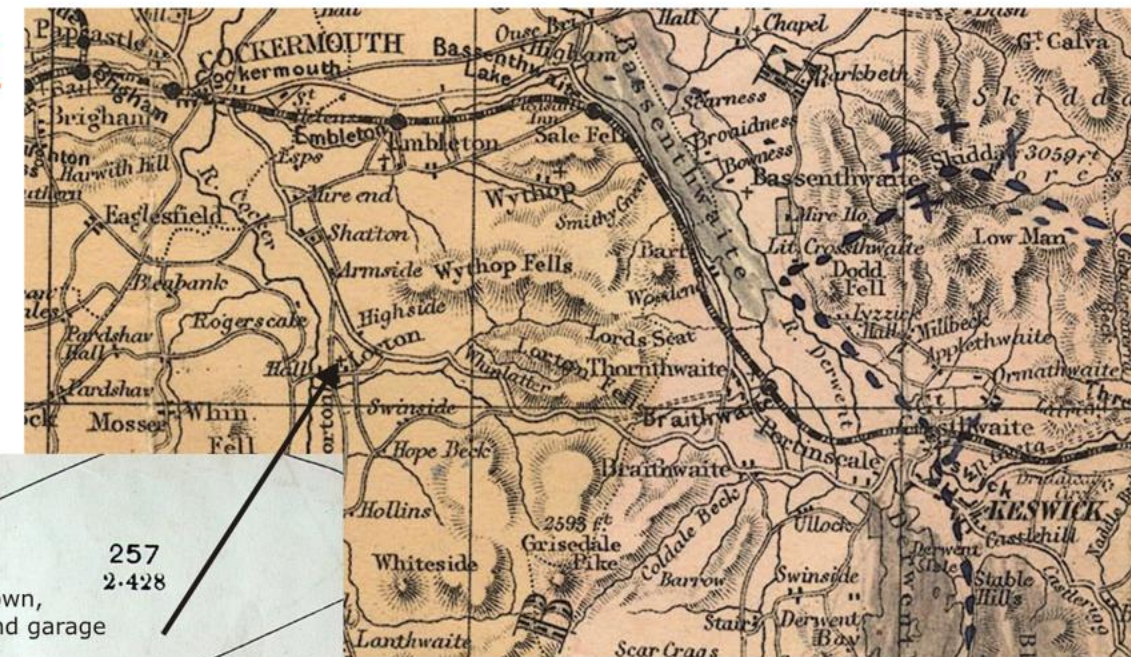
Lorton & Derwent Fells Local History Society Scott's Garage 1

Brackenthwaite Buttermere Embleton Lorton Loweswater Mosser Pardshaw Whinfell



High Lorton was a row of medieval farmsteads, but found itself on the Cockermouth - Keswick turnpike in the late eighteenth century, and able to develop industry and trades. The peripheral farms took over the village farmland and the village row became houses, workshops and business premises, in some ways a detached part of Cockermouth. In the twentieth century it could provide sufficient trade to support a passenger transport business, and then garage services. An important element was the transport of visitors between railway stations and hotels in Loweswater and Buttermere.

This exhibit illustrates the life cycle of this family business over some fifty years.



From Bacon's map of Cumberland & Westmorland circa 1907



Part of High Lorton, early 20th Century

- Kent Cottage
- Causey Cottage
- Beech Cottage (Borthwick the tailor)
- Joiner's shop
- Red House
- Old block stands on garage site



This OS map of High Lorton in 1899 was annotated for the land tax survey in 1913. The old block where the first garage was later built is in two ownerships. It is not clear whether the block has been demolished yet, but the answer will be in the survey in The National Archive.



The Scott family lived first at Kent cottage as tenants. George met Ethel Robinson at a wedding in Wythop, where he provided the car and she played the organ. They married in 1923 and Joyce was born in 1924. This photograph of Ethel, Joyce and dog was taken in the early 1930s. Mrs Lennox on the right.

George Scott, 1897-1968, was the third son of a Tallentire farmer. After serving in the Border Regiment in WWI, he came to Lorton, staying with his sister, and set up as a hackney carriage owner and driver. Scott's garage was established in 1921 and continued through two generations until 1975.



The vehicle in front is George Scott's first taxi, a model T Ford, registered with Cumberland County Council in 1920 as AO 5746. This is the first garage in the early 1920s.



George Scott's first bus, AO 6489, also registered in 1920 and also based on a model T Ford. It is the second vehicle in the left hand photograph.



The 1908 Ford Model T was the car which literally 'put America on wheels'. By 1927, some 15 million Model Ts had been produced, all essentially similar. During 1923 alone, some 1.8 million were sold!